

Rosenbauer system solutions

Fire Fighting



Fire Fighting System
Hungary, November 2009

Rosenbauer – Full-Liner in the Fire Fighting Business

Fire Fighting Trucks



Aerials and
Plattforms



Fire Fighting
Systems



Equipment



Rosenbauer – All out of one hand



The pump for your demands

- Pumps available: normal pressure, combined normal and high pressure
- Maximum pump outputs from 1.000 l/min to 10.000 l/min at 10bar (tank suction mode)
- Operation the same at all pumps – similar to foam systems



Foam Systems for each industrial application

Around the pump Foam systems

- Admixes foam the whole system
- Pump is full with foam
- Easy, most mechanical system
- Either on all outlets foam or on all outlets water
- For big amounts of foam (turret)
- No feeding into the pump possible

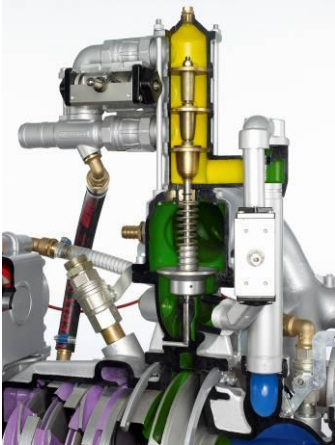
Direct foam injection systems

- Admixes foam to the outlets
- No foam in the water pump
- Electrical controlled systems
- On the outlets you can chose individually if you want water or foam
- Feeding into the pump is possible

Around the pump foam systems

FIXMIX

- For N/NH pump series
- Adjusts itself to the amount of water
- Up to 3 admixing rates on the normal pressure side



FOAMATIC

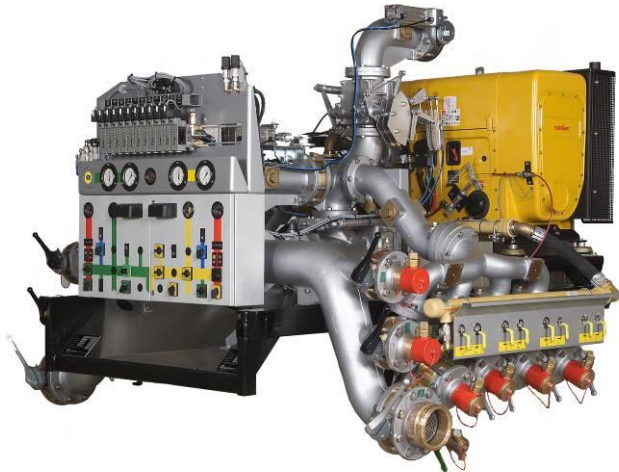
- For R600 manual or electrical
- For N100 electrical
- Manual system with 3 admixing rates
- Electrical system also stepless, display of foam and water flow



Foam Systems for each industrial application

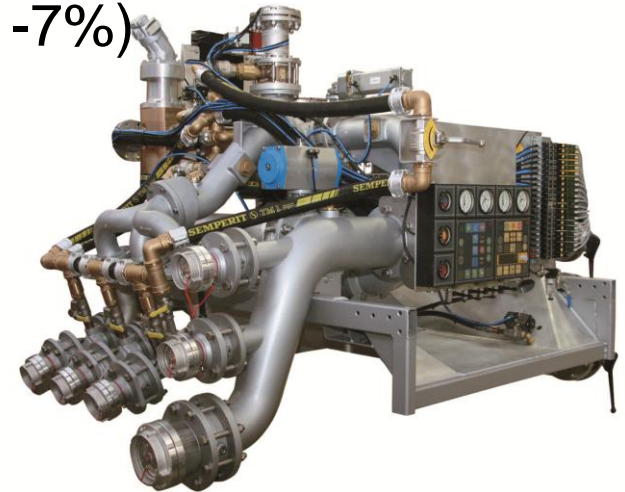
MIXMATIC

- Centrifugal pump R60 as foam pump – up to 440 l/min at 16bar
- Driven by Hatz diesel
- 2 (3) foam admixing rates per outlet (1,2,3,4,5,6,7,8%) + water



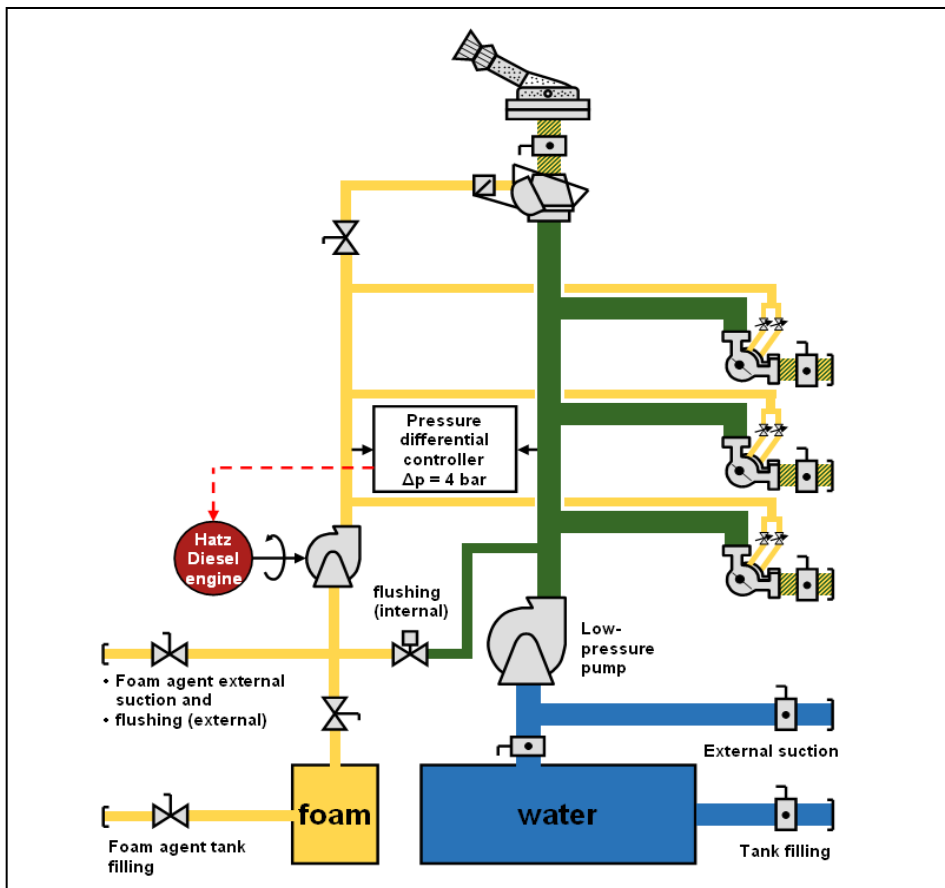
HYDROMATIC

- Gear pump as foam pump – 500 l/min or 700 l/min at 16bar
- Driven by hydraulic via 2nd PTO
- Stepless adjustable %-rate per outlet (1-7%)

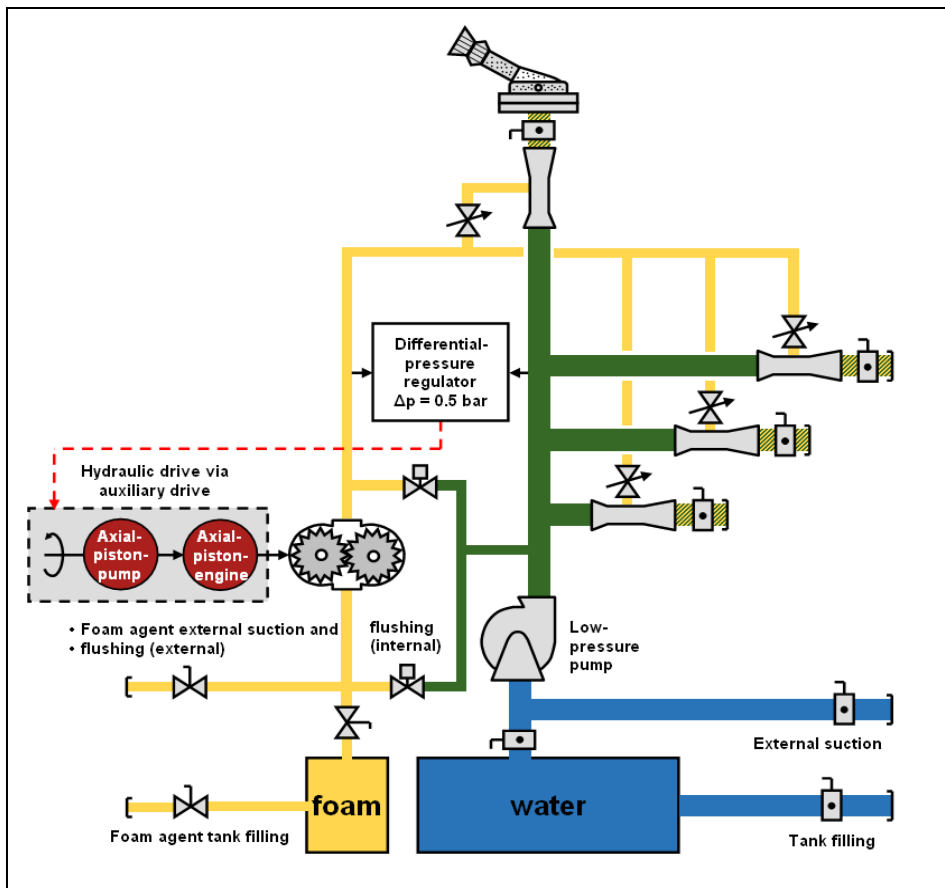


Schematics

MIXMATIC



HYDROMATIC



The turret for your demands

- Turrets available: with o-stream nozzle, foam barrel, for powder application
- Also fully CAFS ability at all turrets
- Maximum turret outputs from 1.000 l/min to 7.000 l/min at 10bar
- Different operation handles – same for all turrets



Easy operation for your pumps and foam systems

- Colours for the different agents
- Logic operation path for operate the systems
- Backlighted panel also for bad weather conditions
- Similar on all trucks – easy to find your way



Fire trucks in comparison to stationary units

- Always the best position to fight the fire
- Fire can be fight from different sides with more trucks
- Standpoint can be changed if necessary (wind,....)
- Flexible solution – different trucks for different needs
- Two turrets to fight different fires
- With hydrants no problem to supply the trucks

Fire trucks for Industrial Fire Fighting



Fire trucks for Industrial Fire Fighting



Fire trucks for Industrial Fire Fighting



Fire trucks for Industrial Fire Fighting



Fire trucks for Industrial Fire Fighting



Fire trucks for Industrial Fire Fighting



Fire trucks for Industrial Fire Fighting



Fire trucks for Industrial Fire Fighting



ROSENBAUER – Also stationary units

- Engine-Pump units - SP
- Engine Pump trailers – SPA
- Available with all Rosenbauer pumps



ROSENBAUER – Also stationary units

- Turret systems
 - More turrets mounted in a building to protect it
 - Turrets can move in a window to extinguish the fire
 - Different sizes of the turrets available – depending on the size of the building
- CAFS units (premix solutions)
- Trolleys for fire protection inside the factory
 - Better protection than fire extinguisher
 - With CAFS foam – 35, 50 liters
- Twin Agent Anlagen for Off Shore





**ROSENBAUER International
AKTIENGESELLSCHAFT**

A-4060 Leonding, Paschinger Str. 90

Tel: +43 732 6794 0

Fax: +43 732 6794 83

office@rosenbauer.com

www.rosenbauer.com



