

VIII. Lakiteleki Tűzvédelmi Szakmai Napok

Videokamerák alkalmazási lehetőségei a
tűzmegeelőzés és a tűzjelzés területén

Pelyák Norbert

To complement your surveillance system

Visual camera



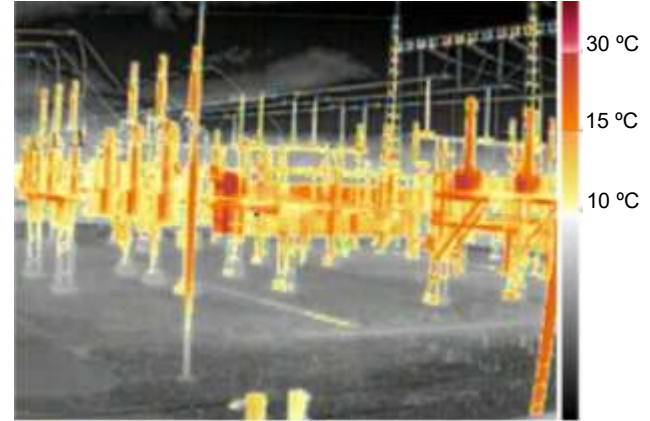
> Color identification

Thermal camera



> Intrusion detection

Temperature alarm camera

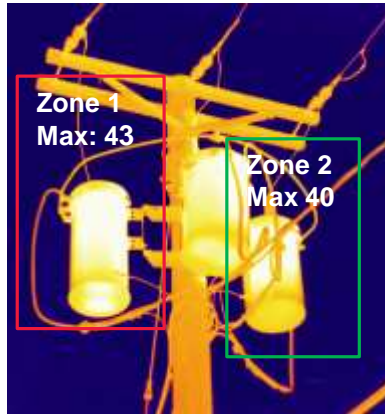


> Detecting the high and low temperature

Key features and benefits

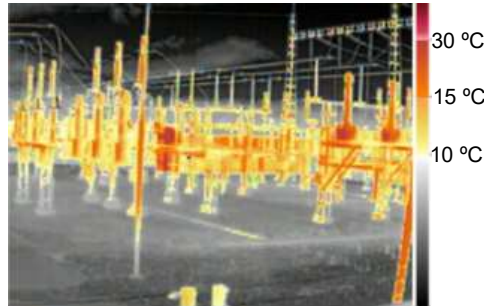
Key features

Temperature Detection



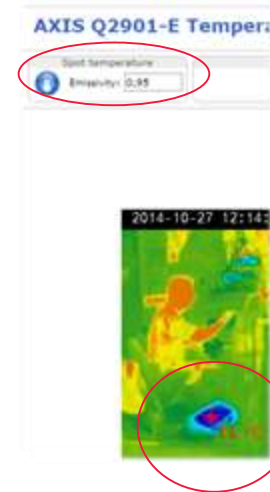
Alarm for any temperature changes

Isothermal palettes



As a visual aid for an operator to highlight temperatures

Spot Temperature



Click in the image for temperature info

Q2901 19mm 2015-0

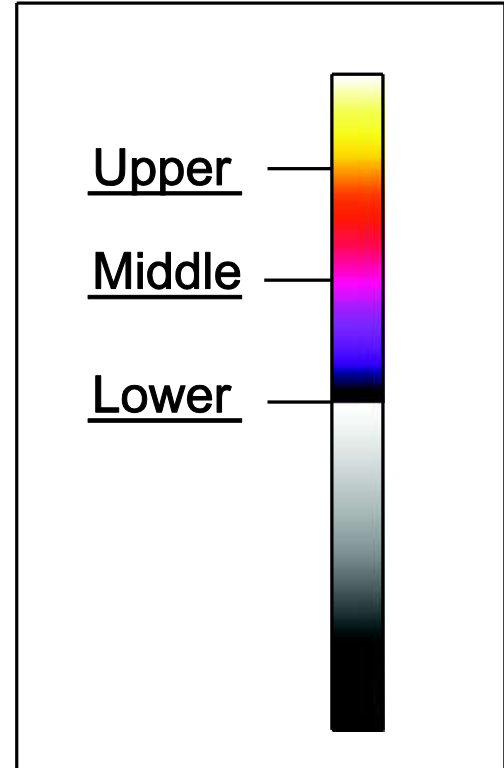
NoSm
Max: 2

www.



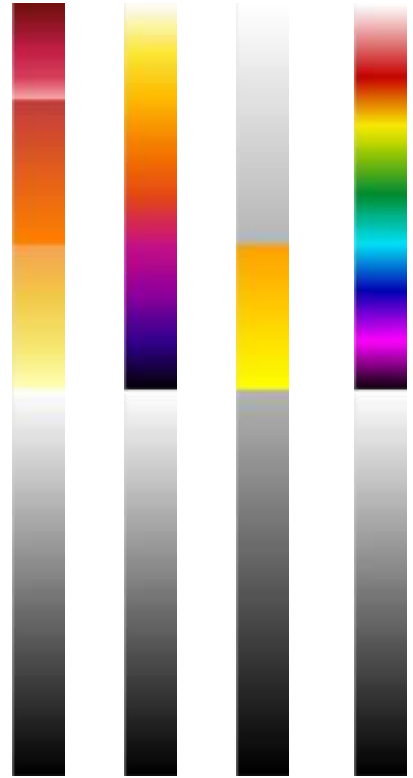
Isothermal palettes

- > To define which temperature corresponds to which color
- > Lower limit
 - Denotes the temperature where the colored part of the palette will start
 - All temperatures above this will stand out
- > Middle and Upper limits
 - Denote the start of these colors



Isothermal palettes

- > Easier to interpret what takes place in the scene
- > Temperature limits can be set
- > Range of different isothermal palettes
- > Visual aid to verify temperature alarms



Spot temperature reading

- > To view the temperature of a particular area of the image
- > Emissivity can be adjusted (depending on the material characteristics*) to get a more precise reading
- > Used as a visual aid for an operator

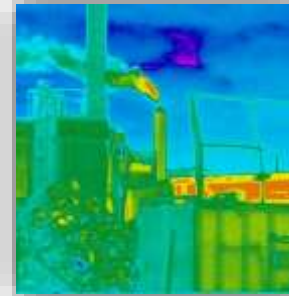
* For a list of emissivities, see www.axis.com/q29_series/index.htm



Applications & examples

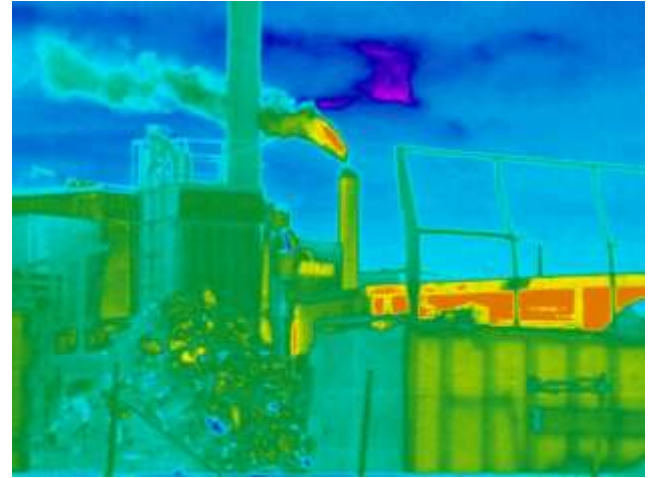
Application areas

- > Remote temperature monitoring of
 - Switchgears, gas and water turbines
 - Transformers and electrical substations
 - Coal piles, dump sites, storage sites and silos
 - Self-igniting materials
- > Perimeter surveillance
 - AXIS Q1941-E/Q1942-E Thermal Cameras are the ideal choice



Thermal imaging to...

- > Tackle a number of issues
 - Locating problem areas
 - Checking the condition of insulation
- > Predict failures
 - Overheated parts before they break down
 - Before the issue become visible to the eye
 - Before machinery stops working



AXIS Q2901, működése

